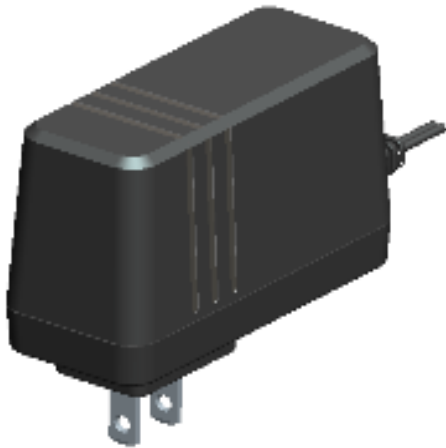


# 30W Wall Mount Power Supply Adapter



## ■Features:

- Small low profile package
- No-load consumption<0.1W · Meet DOE VI
- Isolation level: Class II
- Protections: Short circuit/Overload/Overvoltage
- RoHS、Reach compliance
- LED indicator function optional
- Hi Anti-thunder, Hi ESD protection, Hi-Rel

## ■Application:

- Ethernet devices
- Portable tool
- Audio, Video player
- STB, Network devices
- Charger/PD charger

## ■Description:

The F30L7 series model is a wall-mounted power adapter with a plastic shell design, which can effectively prevent users from electrical hazards. Its working efficiency meets the latest energy efficiency requirements. It can work safely and effectively in an ambient temperature of 0℃ to 40℃. It has complete protection function and is also in line with the relevant certification of electronic information & audio and video(IEC60950、IEC60065、IEC62368). It uses 30W shell, and 22# wire to be compatible with level 5 or 6 energy efficiency. The lightning strike meets 4KV. EMC is designed with Y-cap.

## Key Spec.

MODEL	F30L7-120250SP	
Output	DC Voltage	12V
	Rated Current	2.5A
	Current Range	0 ~ 2.5A
	Rated Power	30W
	Ripple & Noise (max.)remark 2	120mVp-p
	Voltage regulation rage	11.4 ~ 12.6V
	Voltage accuracy remark 3	±5.0%
Input	Voltage range	90 ~ 264VAC(277VAC accessible, compatible with 300VAC in India high voltage)
	Frequency range	47 ~ 63Hz
	Efficiency(Typ.)	86.95%
Safety	Safety Standards	IEC/EN60950、60065、62368
	Safety type	“●”Indicates that it is currently certified, “◎”Indicates that the applicant meet the certification requirement but not be certified
	CB	●
	CE+LVD	●
	BIS	◎
	UL/CUL	●
	GS	◎
	PSE	◎
	PSB	◎
	CCC	◎
	RCM	◎
	BSMI	◎
	IRAM	◎
	KC	◎
	SABS	◎
	SASO	◎
	EAC	◎
	B-MARK	◎
SII	◎	
BR	◎	

# 30W Wall Mount Power Supply Adapter

## Electric Spec.

MODEL		F30L7-120250SP			
Output	DC Voltage	12V			
	Rated Current	2.5A			
	Current Range	0 ~ 2.5A			
	Rated Power	30W			
	Ripple & Noise (max.) <small>remark 2</small>	120mVp-p			
	Voltage regulation rage	11.4 ~ 12.6V			
	Voltage accuracy <small>remark 3</small>	±5.0%			
	linear adjustment rate	±1.0%			
	Load Stability	±3.0%			
	Start and rise time	2000ms, 80ms/230VAC 3000ms, 80ms/115VAC(full load)			
Retention time(Typ.)	20ms/230VAC 10ms/115VAC(full load)				
Input	Voltage range	90 ~ 264VAC(277VAC accessible, compatible with 300VAC in India high			
	Frequency range	47 ~ 63Hz			
	Stand-by power consumption	100mW			
	Efficiency(Typ.)	86.95%			
	AC current(Typ.)	0.8A max @100~240v			
(Typ.) Surge(Typ.) current	COLD START 30A/100Vac				
Protection	Overload	110~145% rated output power			
		Hiccup mode: output voltage < 50%, recovers automatically after fault condition is removed.			
	Overvoltage	18 ~ 24V Protection Type: Turn off the output, through the PWM control chip built-in VDD			
Environment	Working TEMP.	0~+40°C (45°C can work)			
	Working Humidity	20 ~ 95% RH, non-condensing.			
	Storage Temp.& humidity	-20 ~ +75°C, 20 ~ 95% RH, non-condensing			
	Temperature coefficient	±0.03%/°C (0~50°C)			
	Vibration resistance	10 ~ 500Hz, 1G 10min/cycle, X, Y, Z 30min for each			
	Operating altitude	5000 meter			
	Withstand voltage(Hi-Pot)	I/P-O/P:3KVAC			
	Insulation resistance	I/P-O/P:100M Ohms / 500VDC / 25°C/ 70% RH			
Electromagnetic compatible	Electromagnetic compatible emission	Parameter	Standard	Test Level / Note	
		Conducted	EN55032(CISPR32), FCC Part 15B	Class B	
		Radiated	EN55032(CISPR32), FCC Part	Class B	
		Harmonic Current	EN61000-3-2	Class A	
	Voltage Flicker	EN61000-3-3	-----		
	Electromagnetic compatibility immunity	EN55035, EN61000-6-2, EN61204-3			
		Parameter	Standard	Test Level /Note	
		ESD	EN61000-4-2	Level 3, 15KV air; Level 2, 8KV contact,	
		Radiated	EN61000-4-3	Level 3, criteria A	
		EFT/ Bursts	EN61000-4-4	Level 3, criteria A	
		Surge	EN61000-4-5	Level 4, 4KV/L-N, criteria A	
		Conducted	EN61000-4-6	Level 3, criteria A	
		Magnetic Field	EN61000-4-8	Level 4, criteria A	
Voltage Dips and interruptions	EN61000-4-11	>95% dip 0.5 periods, 30% dip 25 periods, >95% interruptions 250 periods			
Other	MTBF	≥100K hrs. MIL-HDBK-217F (25°C)			
	Size (W*H*D)	86.5*53*37.5mm			
Remark	<p>1., All specifications and parameters shall be measured at the input of 230VAC, rated load and ambient temperature of 25°C unless otherwise specified.</p> <p>2. Ripple and noise measurement method: capacitance of 0.1uF and 47uF in parallel at the terminal and the measurement is performed under the 20MHZ bandwidth.</p> <p>3. Accuracy: includes setting error, linear adjustment rate and load adjustment rate.</p> <p>4. The power supply is an independent component, but the final power supply still needs to be confirmed in connection with the electromagnetic compatibility of the terminal equipment.</p>				